



Lieferumfang

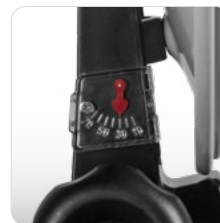
- Transportkoffer (Kunststoff)
- 40 x 35 cm Spiegel (Stahl)
- Saugfuß
- Mast- und Wandhalterung
- Kompass
- Montagezubehör
- Aufbauanleitung
- Single LNB
- 10 m Koaxialkabel
- 2x F-Stecker
- 1x Gummitülle

Logistische Daten

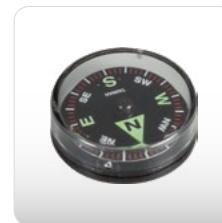
- Abmessungen Transportkoffer: 410 x 500 x 120 mm (B/H/T)
- Gewicht: 3640 g

Leistungsmerkmale

- Robuste Camping-Satellitenanlage mit umfangreichen Zubehör.
- Der Saugfuß garantiert eine feste und stabile Montage auf allen glatten Oberflächen.
- Kann der Saugfuß nicht angebracht werden, liegt im Lieferumfang auch eine Halterung zur Befestigung an einem Mast oder einer Wand bei.
- Der zusätzliche Lieferumfang beinhaltet ein Single LNB, Koaxialkabel sowie passende F-Stecker und eine Gummitülle.



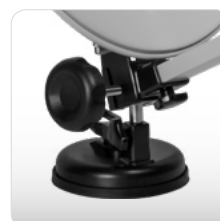
Elevationsmesser



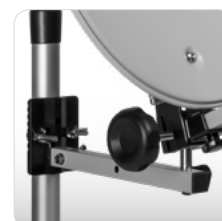
Kompass



Transportkoffer



Saugfuß für Oberflächen



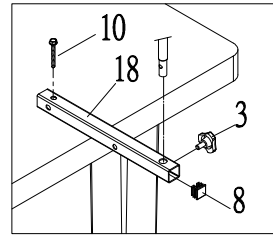
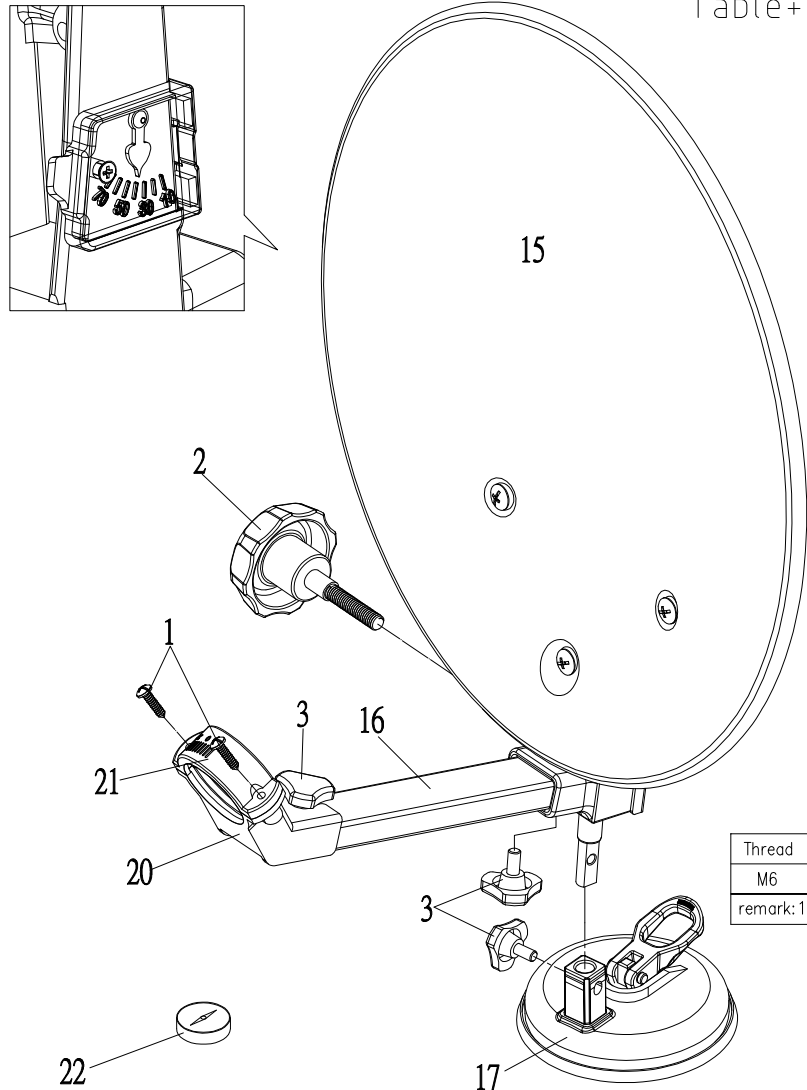
Montage am Mast



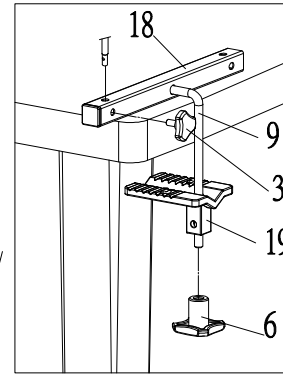
Montage an der Wand

MEGASAT

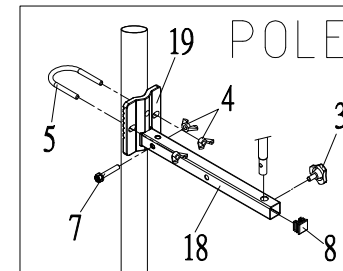
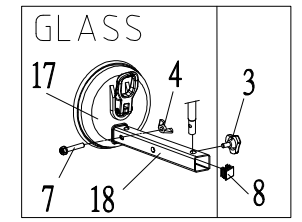
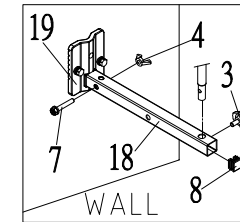
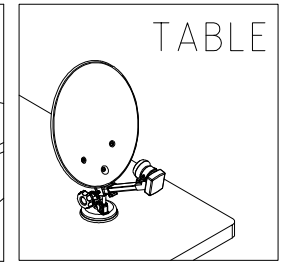
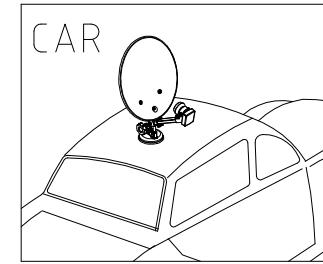
Montageanleitung/Mounting Instruction



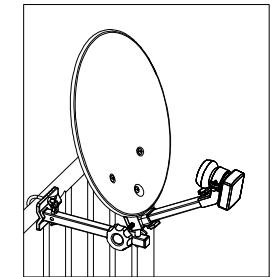
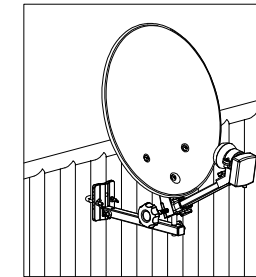
Table+Selftap screw



L Type Rod Adjust+Fix plate on Table

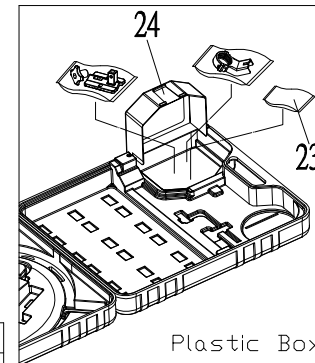


POLE



Handrail Vertical position

Handrail Horizontal position



Plastic Box

Thread	Max Tightening torques	
M6	8.8N.m	90Kgf.cm
remark: 1N.m=10.197Kgf.cm		

24		Tool box cover	1
23		Screw kit	1
22		COMPASS	1
21		40mm LNBF Clamp	1
20		40mm LNBF Clamp Holder	1
19		Fix plate	1

18		Extention rod	1
17		Base	1
16		LNBF Arm	1
15		Reflector w/Bracket	1
10		1/4"*2" drill self screw	1
9		L Type Rod Adjust	1
8		Plug	1
7		M6*35 Hex-head cap screw W/W	1
6		M8 Knob nut	1
5		M6*W38 U Bolt	1
4		M6 Wing nut	3
3		M6 knob bolt	3
2		M8 Knob nut	1
1		ø4*5/8" self-drilling screw	2
NO.	ITEM	DESCRIPTION	Q'TY